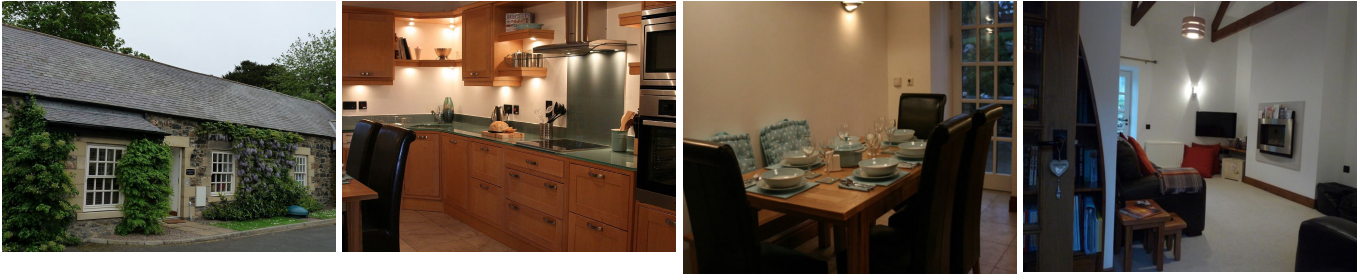


Bayside Cottage

Bamburgh & Surrounds



Bayside Cottage is one of a small number of cottages which have been converted to a high standard from stone farm buildings situated above Budle Bay. With tall raftered ceilings the cottage offers traditional elements, modern facilities and appliances, flexible bedrooms, and 2 bath/shower room. Bayside offers a homely and relaxing retreat in a beautiful location, being situated in walking distance to the beach and just a mile from Bamburgh, its village amenities and its Castle and is Ideally placed for lovers of the sea, vast sandy beaches, castles, wildlife and countryside.

The Cottage provides

- Lounge with comfortable seating, TV and DVD and views to the garden
- Kitchen diner is well equipped and provides access to the outside patio and garden with views to the bay and Lindisfarne beyond.
- 3 bedrooms -
 - the Master is a spacious super king double, with seating area and TV, ensuite bathroom (bath with shower over)
 - Bedroom two is a twin room, seaside decor and a window seat.
 - Bedroom three is also flexible usually a twin but can be a super king double on request this room also has a window seat
- Family shower room.

Outside to the front there is parking for two cars in the communal entrance courtyard.

To the rear is a fully enclosed garden with patio dining area, BBQ and a tiered grassed area from which there are views to the bay.

- We regret that Bayside does not accept pets.
- Whilst the property is all on one level and so may be suitable for those with limited mobility there is a kerb step to reach the house and also a small step into the main shower.
- Outside the garden is on two levels, patio and lawn.
- During the main season from June to September usually only accepts full week or fortnight bookings starting on a Saturday.

Pricing Per Week

August	£1,300.00
September	£790.00 - £1,300.00
October	£690.00 - £1,050.00
November	£690.00
December	£690.00
January	£690.00

Quick View

Sleeps Up to	6
7 night start day	Saturday
7 nights from	690
S/B from	£518.00
Bedrooms (total)	3
Bathrooms (total)	2
Gr. Floor bedrooms	3
Bath/Showers	1 / 1
Pets (Max Pets)	No
Parking (Max Cars)	Yes (2)
Garden	Enclosed
Fire/Logburner	No
Wi-Fi	Yes
Sky TV	No