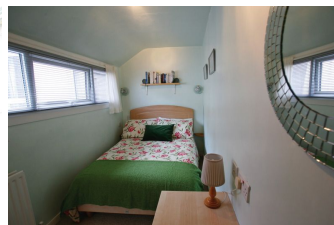
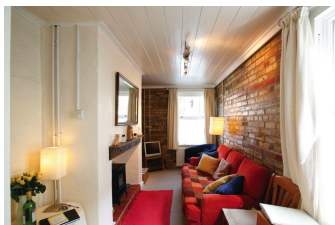
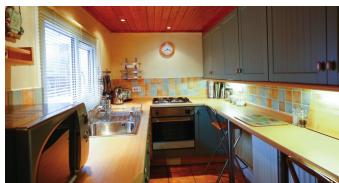


## Platone Cottage

### Alnmouth & surrounds



Tucked away off the main thoroughfare of Alnmouth village this compact hideaway cottage is a true delight.

With either two double bedrooms or a double bedroom and second upstairs sitting room, the cottage is within easy walking distance of the beach, the river estuary, a choice of pubs, restaurants, hotels and cafe. The local post office and gift shop are just around the corner, or enjoy the relaxing atmosphere of the cottage with a good book or two or even allow yourselves time to read the whole of the Sunday paper in a day!

Alnmouth, extremely popular in summer, retains its charm with narrow streets, numerous alleyways and footpath walks. The tidal river estuary is often awash with activity. Close at hand are both Foxton and Alnmouth Links golf courses and miles of glorious sandy beaches lie to the north and south. Follow the alleyway leading to the main village and walk to a different pub or restaurant each night - particularly recommended is the local cuisine at The Red Lion and enjoy a meal in front of their open fire!

#### Facilities:

##### Downstairs:

Side entrance door leading to:

- a small hall with space under the stairs for a dog bed and outdoor shoes.
- step up to the modern galley **kitchen** with pine-clad ceiling and fitted with electric cooker, gas hob, fridge/freezer, washing machine, microwave, radio and breakfast bar with stools.
- narrow **living area**, with sloping floor and two exposed natural soft brick walls, has a sofa and chairs, electric fire in traditional fireplace, TV, digi-box, DVD and CD player, games.
- **dining area** with pull out table and chairs.

##### Upstairs:

Part open tread stairs lead to landing with

- **Bedroom 1:** a small room furnished with a double bed, fitted wardrobe, drawers, vanity unit and small bedside shelves.
- **Bedroom 2:** a bedroom with Oriel window, window seat and cast iron decorative fireplace. This room is usually set up with a double bed but it can be changed to accommodate a sofa and chairs enabling you to relax with a selection of books.
- small **family bathroom** has a bath with overhead shower, heated towel rail, WC and wash hand basin.

##### Outside:

- Small decked area with garden furniture to the side, shared access through to the adjacent property.
- 1 designated car parking space at the cottage.

#### What is included:

- Bedding (duvets per bed & 2 pillows per person)
- Bed linen
- Towels (hand & bath sheet per person)
- Gas central heating
- Hairdryer
- Iron and ironing board
- Vacuum cleaner
- Cleaning materials
- Welcome tray (tea, coffee, biscuits, wine, milk)

#### Notes and Conditions:

Although internet access is not provided at Platone Cottage, Wi-Fi is available in the Hope and Anchor pub in Alnmouth, just 100 metres from the cottage.

One well behaved small dog welcomed £20 per week.

Cot and High chair are available on request.

Short breaks are available at this property at certain times of the year.

#### Pricing Per Week

June	£493.00
July	£493.00 - £583.00
August	£583.00
September	£462.00 - £493.00
October	£319.00 - £493.00
November	£319.00
December	£319.00
January	£329.00 - £583.00
February	£329.00 - £423.00
March	£329.00 - £508.00
April	£423.00 - £508.00
May	£476.00 - £600.00
June	£508.00

#### Quick View

Sleeps Up to	4
7 night start day	Flexible
7 nights from	319
S/B from	£255.00
Bedrooms (total)	2
Bathrooms (total)	1
Gr. Floor bedrooms	0
Bath/Showers	1 /
Pets (Max Pets)	Yes (1)
Parking (Max Cars)	Yes (1)
Garden	Yes
Fire/Logburner	No
Wi-Fi	No
Sky TV	No